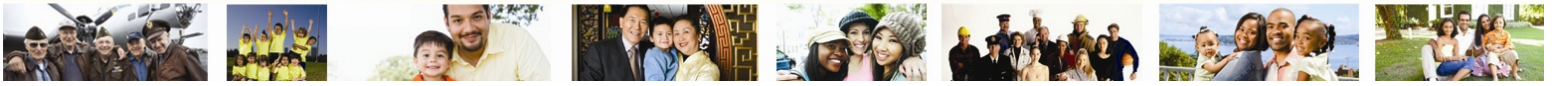


**Office of the City Clerk
Election Division**



**The Department of
Neighborhood Empowerment**



In December, the City Council of Los Angeles approved the transfer of responsibility for conducting the Neighborhood Council elections to the City Clerk. So as to ensure a smooth transition between the different departments running the elections, the Department of Neighborhood Empowerment and the City Clerk invite you and your neighborhood council board members to an Informational Meeting.

We will have an Informational Meeting in your area to inform your board about the transition process and answering your questions about the upcoming elections.

We will be in your area meeting with Neighborhood Councils on:

Date:

Wed, January 16, 2008

Time:

6:30 pm

Address:

**Glassell Park Community Ctr.
3750 Verdugo Road
LA, CA 90065**

For more information on this meeting or for assistance regarding parking arrangements, please contact your DONE Project Coordinator, or the following offices:

**City Clerk – Election Division
Neighborhood Council Election Unit
(213) 978-0444
(888) 873-1000**

**Department of Neighborhood Empowerment
(213) 485-1360**



**Supporting Elections in
your Neighborhood.**



3750 Verdugo Rd
Los Angeles CA
90065-3660 US

Notes:

Wed, January 16, 2008
Time: 6:30 pm

Glassell Park Community Ctr.

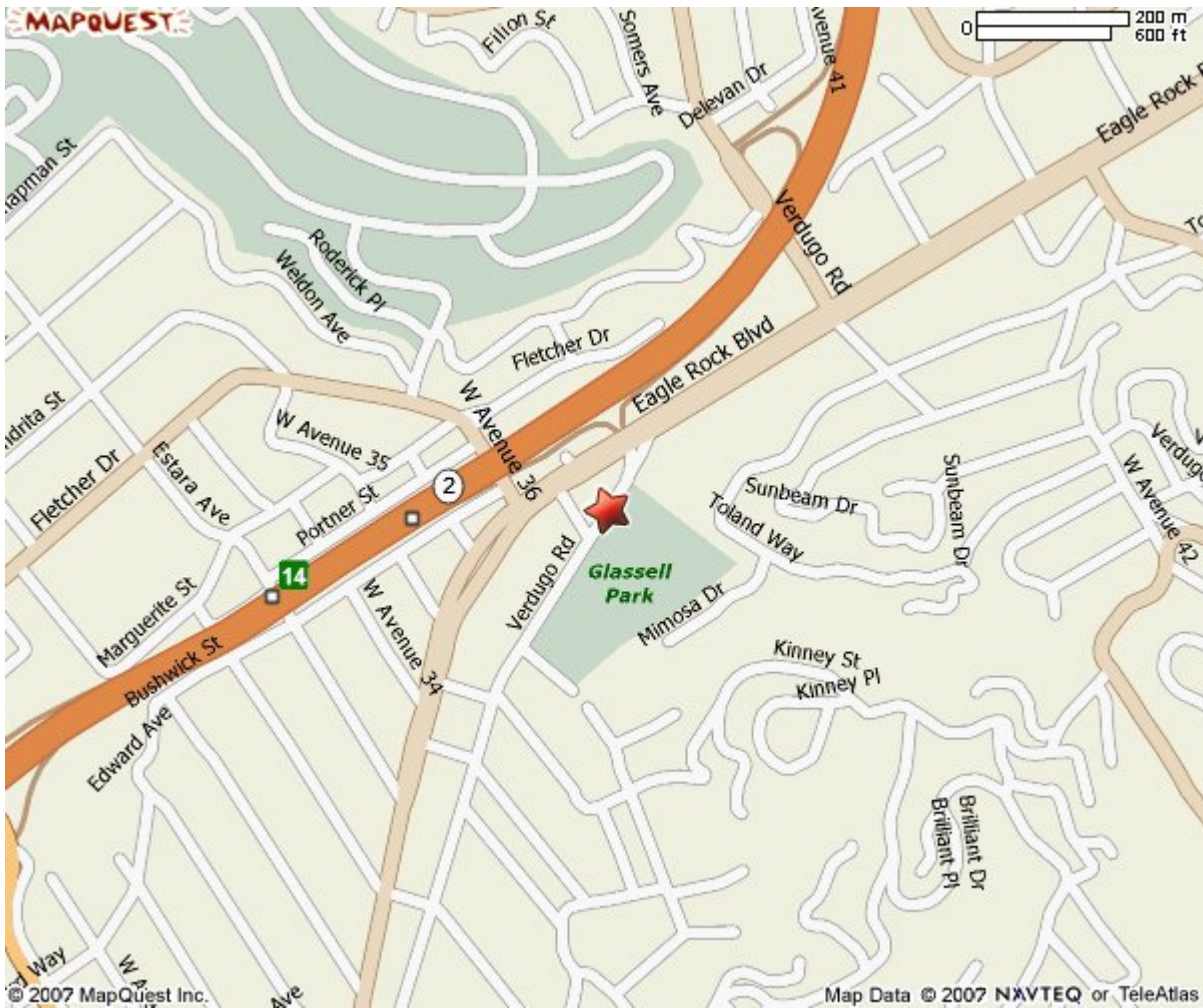
What is Your Credit Score?

TransUnion	Experian	Equifax
300 350 400 450 500 550 600 650 700 750 800	300 350 400 450 500 550 600 650 700 750 800	300 350 400 450 500 550 600 650 700 750 800
You are here (648)	You are here (635)	You are here (618)

[Click Here to Find Out!](#)

Based on your credit report data, this is a numerical depiction of your creditworthiness. High scores are better.

[privacymatters.com](http://www.privacymatters.com)



All rights reserved. Use Subject to License/Copyright

This map is informational only. No representation is made or warranty given as to its content. User assumes all risk of use. MapQuest and its suppliers assume no responsibility for any loss or delay resulting from such use.